

2018 Mercedes Benz E63S AMG 4MATIC Sed (213.089) V8-4.0L Turbo (177.980)

Vehicle > Technical Service Bulletins

## CREAKING NOISES AT SEAT WHEN CORNERING (LEFT SIDE OF SEAT)



Mercedes-Benz

# - Creaking noises at seat when cornering (left side of seat) -

Topic number	LI91.10-P-067712
Version	1
Function group	91.10 Front seats
Date	02-23-2018
Validity	BR 213: Up to 09.01.2018 (WDD2130421A409095) BR 205, 253: Up to 19.12.2017 (WDC2539891F394735) BR 257: Up to 08.01.2018 (WDD2573591A000497)
Reason for change	

## Complaint

Noise at backrest frame when cornering on left side of seat. This noise can be described as a metallic screeching.

### File

Video 1.mp4

### Designation

Example of Noise complaints

## Cause

A burr at the bottom of the backrest member may cause contact with the lower crossmember. This produces a noise when the two components move.

## Remedy

Important: It is **not** necessary to remove the seat entirely in order to perform the following work.

Steps to be performed:

- Raise the seat all the way up.
- Detach the seat-back lining (Pic.1).
- Detach the seat cover from the backrest frame on the left side of the seat (Pic.2).
- Push the detached seat cover and the seat cushion to the side in order to expose the affected area (Pic.3).
- Check the area between the backrest member and the lower crossmember using a feeler gauge of thickness .040mm (Pic.4, 5):

Result OK: The gauge passes through the area (Pic.6) - The cause of the noise complaint does not lie in the affected

area. End of test.

Result not OK: The gauge **does not** passes through the area (Pic.7) - Modify the seat backrest frame.

- Enlarge the area between the backrest member and the lower crossmember by moving a screwdriver (5.5 mm) up and down (Pic.8).

- Check whether a feeler gauge of thickness .040mm can be passed through the affected area (Pic.9).  
Enlarge the area more if necessary.

File	Designation
Pic.1.jpg	Removing the seat-back lining
Pic.2.jpg	Detaching the seat cover on the left side of the seat
Pic.3.jpg	Affected area
Pic.4.jpg	Illustration of affected area
Pic.5.jpg	Measuring the area with a size 40 feeler gauge
Pic.6 i.O. Teil.jpg	Illustration of OK check
Pic.7 n.i.O. Teil.jpg	Illustration of not OK check
Pic.8.jpg	Enlarging the gap using a screwdriver
Pic.9.jpg	Final measurement

## Symptoms

---

### Symptom

Body / Seat / Noises / Metallic noise

## Parts

---

Part number	ES1	ES2	Designation	Quantity	Note	EPC
A 000 910 15 03			Backrest frame	1		X
A 000 910 13 03			Backrest frame	1		X

### Pic.1



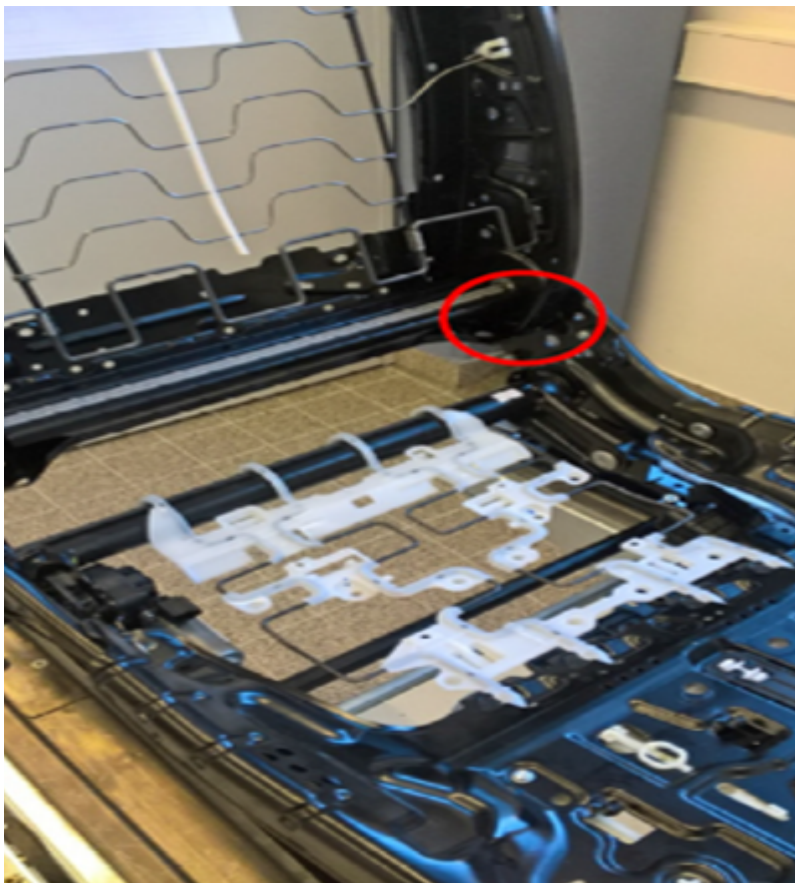
**Pic.2**



**Pic.3**



Pic.4

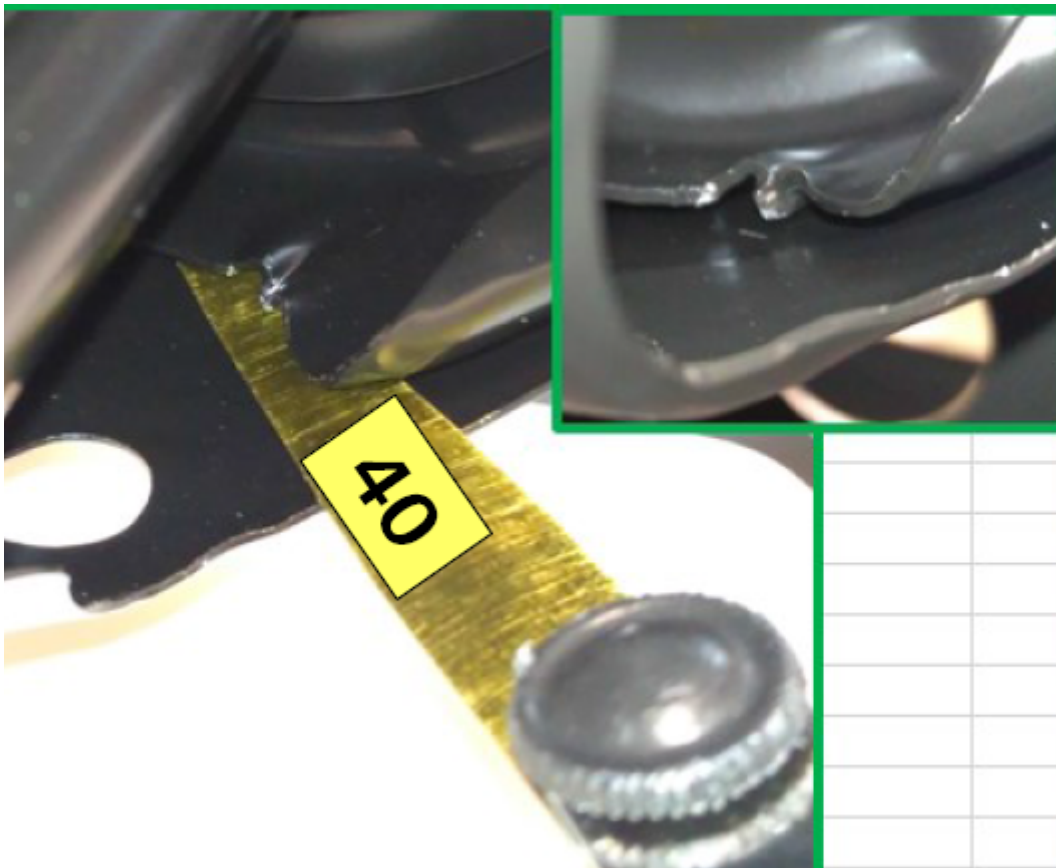


Pic.5

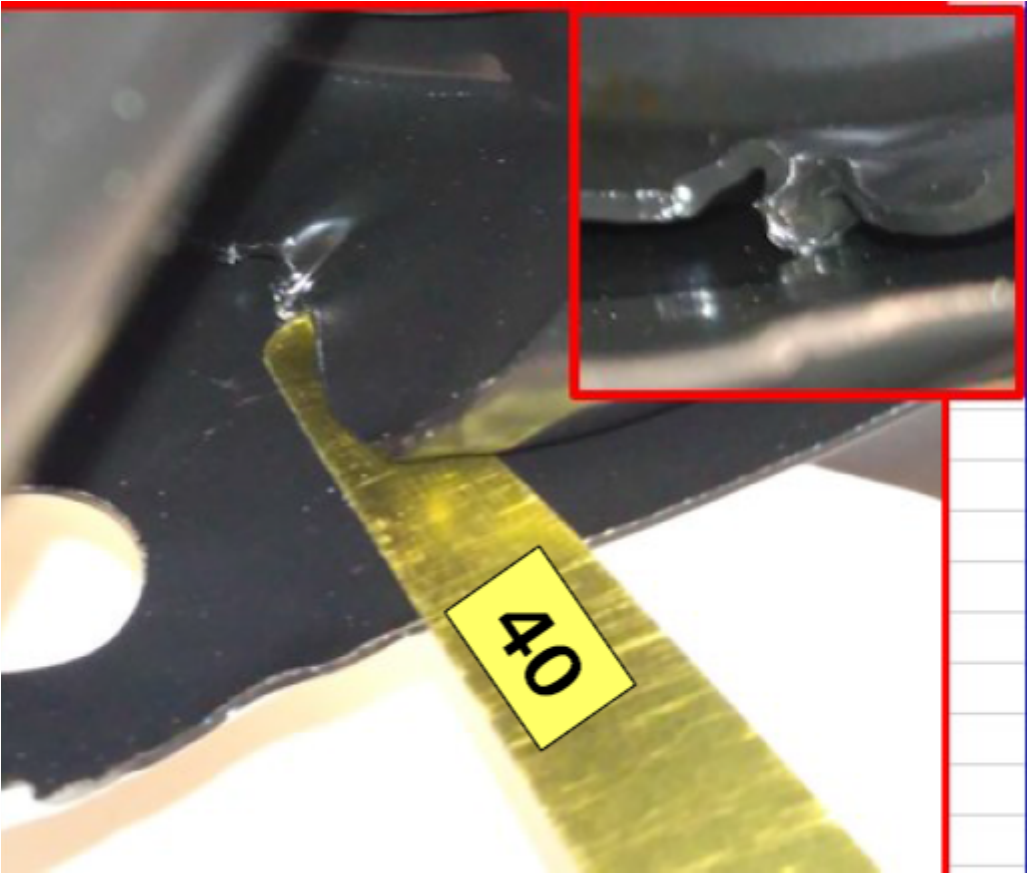




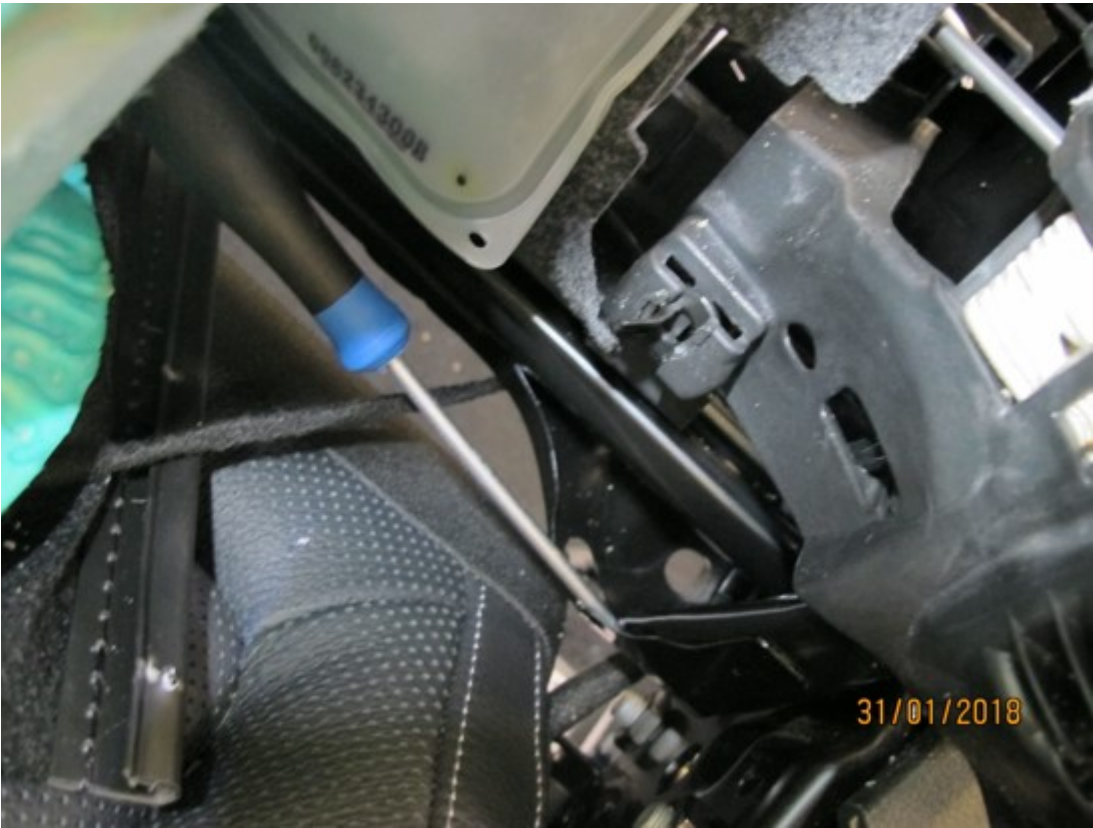
**Pic.6 i.O. Teil**



**Pic.7 n.i.O. Teil**



Pic.8



Pic.9

